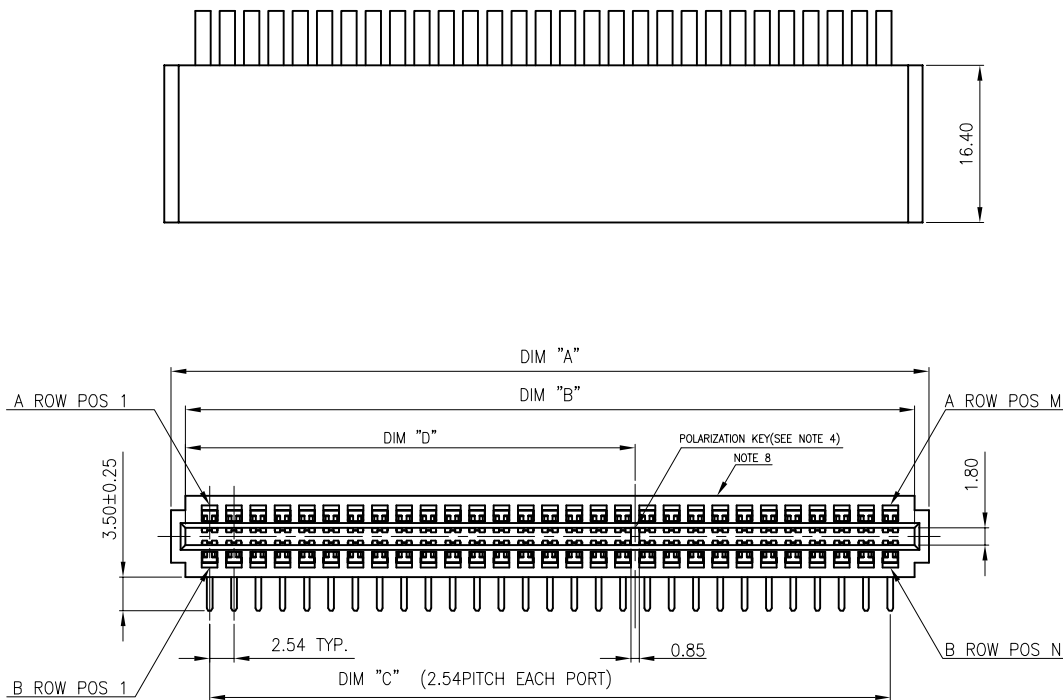




PRODUCT NO.

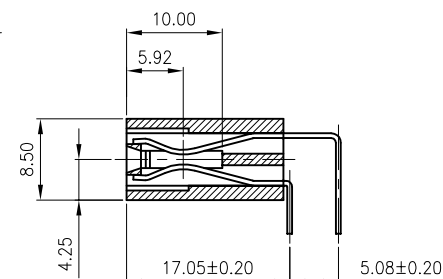
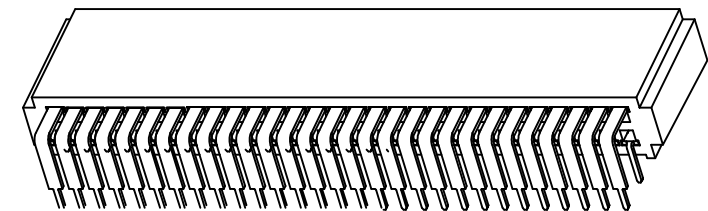
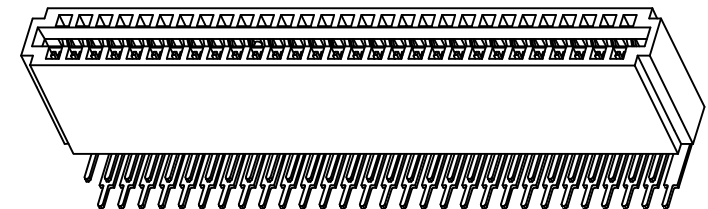
10035388-XXX__

NOTE:5



NOTE:

1. MATERIAL:
HOUSING: HIGH TEMPERATURE THERMOPLASTIC,
UL 94 V-0 RATED, BLACK.
TERMINAL: HIGH CONDUCTIVITY COPPER ALLOY.
2. PRODUCT SPECIFICATION: GS-12-259.
3. PACKAGE SPECIFICATION: GS-14-937.
4. THERE IS NO POLARIZATION KEY IN 10035388-500, 10035388-700 & 10035388-800.
5. PLATING SPEC:
10035388-XXX:
POWER PIN: CONTACT AREA- 30u" GOLD OVER 50u" NICKEL UNDER PLATED.
SOLDER TAIL- 100u" TIN/LEAD OVER 50u" NICKEL UNDER PLATED
AC TERMINAL: 50u" NICKEL UNDER PLATED; 30u" GOLD ON CONTACT AREA
10035388-XXXLF:
POWER PIN: CONTACT AREA- 30u" GOLD OVER 50u" NICKEL UNDER PLATED.
SOLDER TAIL- 100u" PURE MATTE TIN OVER 50u" NICKEL UNDER PLATED
AC TERMINAL: 50u" NICKEL UNDER PLATED; 30u" GOLD ON CONTACT AREA
6. P/N 10035388-XXXLF MEETS EUROPEAN UNION DIRECTIVE
AND OTHER COUNTRY REGULATIONS AS DESCRIBED IN GS-22-008.



7. THE HOUSING WILL WITHSTAND EXPOSURE TO 260°C PEAK TEMPERATURE
FOR 10 SECONDS IN A WAVE SOLDER APPLICATION WITH A CIRCUIT BOARD.
8. MANUFACTURER'S NAME, P/N AND DATE CODE TO APPEAR ON THIS SURFACE
AS PER GS-24-007.

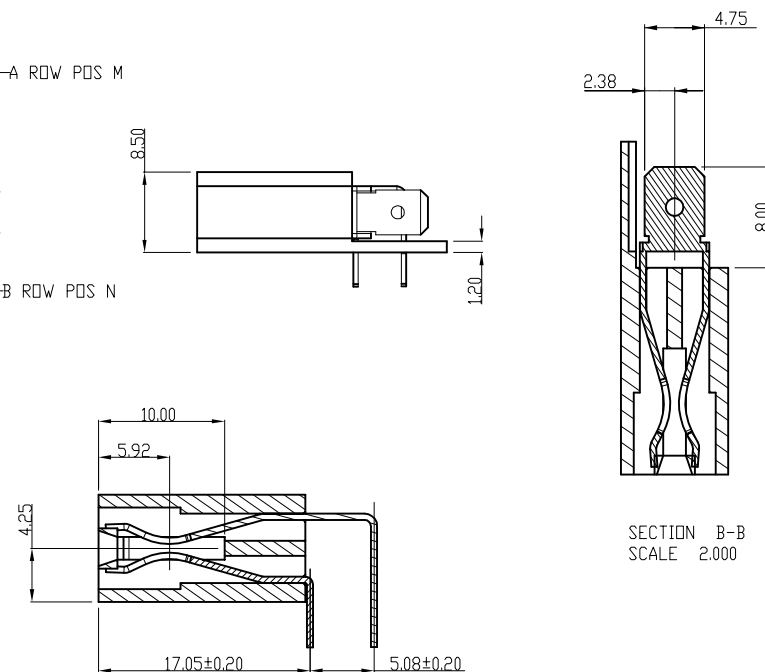
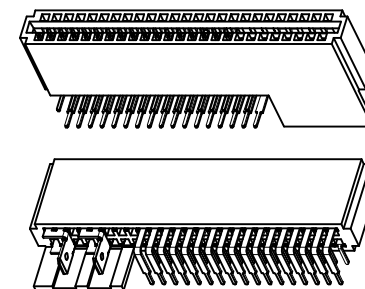
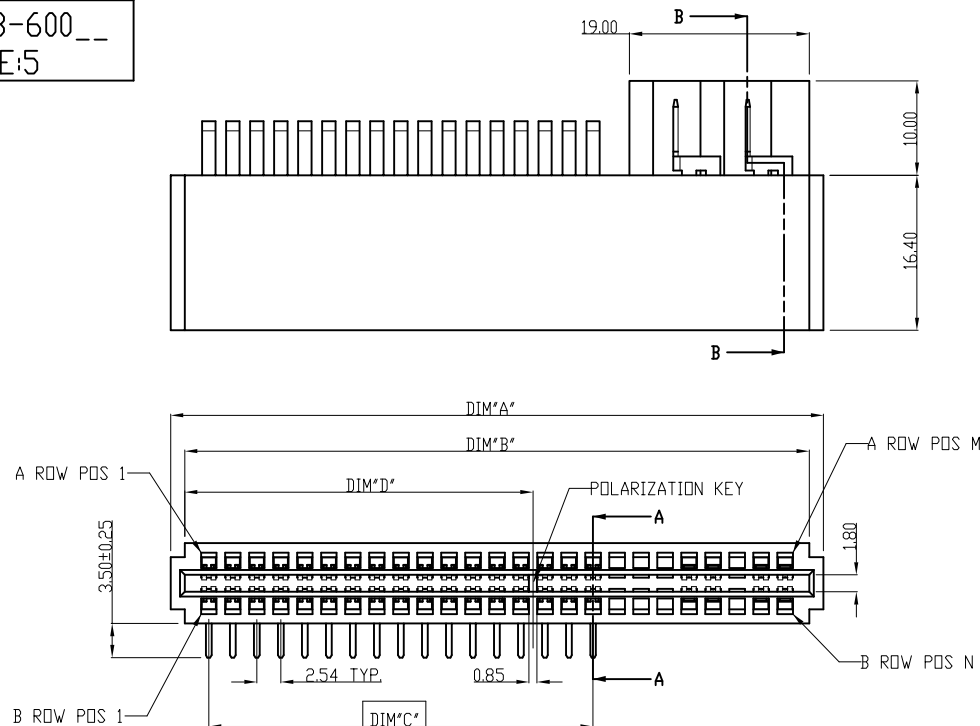
mat'l. code				tolerances unless otherwise specified				CUSTOMER COPY		FCI		www.fciconnect.com	
ltr	ecn no	dr	date	linear	.X ± 0.25			projection		title			
H	T05-0130	DT	06/16/05		.XX ± 0.15					POWER EDGE CARD CONNECTOR			
J	DG05-0197	LH	06/29/05		.XXX ± 0.10					WITHOUT SIGNAL ASS'Y			
K	DG05-0461	SW	10/31/05	angles	0° ± 2°					product family			
L	DG06-0306	RYAN	07/30/06	dr	LH	10/28/04				size			
M	DG06-0524	JULIA	12/26/06	enrg	LH	10/28/04				dwg no			
N	DG07-0130	JULIA	03/14/07	chr	LH	10/28/04				scale			
				appd	DAVID SU	10/28/04				NONE			
sheet	revision	N	N	N	N	N	N						
index	sheet	1	2	3	4	5	6						

PDM: Rev:N

STATUS:Released



Printed: Aug 23, 2008
22526

PRODUCT NO.
10035388-600__
NOTE:5



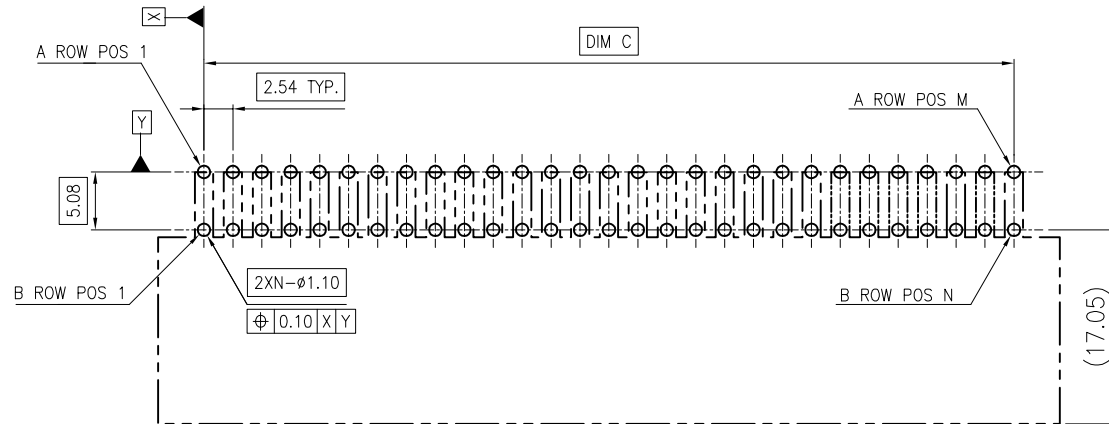
NOTE:
(APPLY TO 10035388-600__ AS ADDITIONAL)

9. THE EMPTY POSITIONS ARE 18, 19, 20, 23.
10. THERE ARE 2 AC TERMINALS.

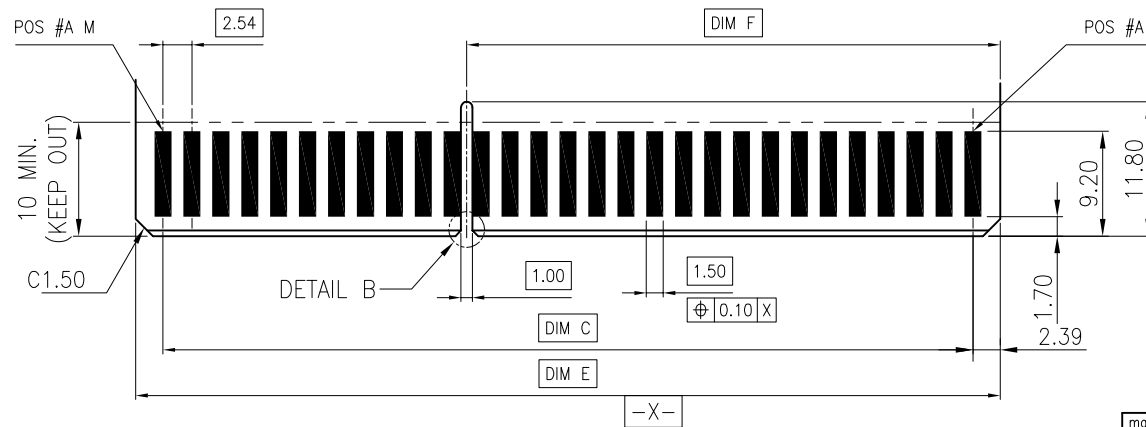
mat'l. code				tolerances unless otherwise specified			CUSTOMER COPY		FCI		www.fciconnect.com	
ltr	ecn no	dr	date	linear	.X ± 0.25		projection		title	POWER EDGE CARD CONNECTOR WITHOUT SIGNAL ASSY		
N					.XX ± 0.15							
					.XXX ± 0.10							
				angles	0° ± 2°			product family size dwg no	code	sheet 2 of		
				dr	LH	10/28/04						
				engr	LH	10/28/04						
				chr	LH	10/28/04						
				appd	DAVID SU	10/28/04						
sheet index	revision sheet						scale	NONE	A3	10035388		



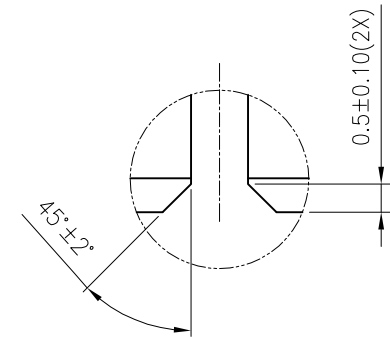
PRODUCT NO.
10035388-XXX__
NOTE:5



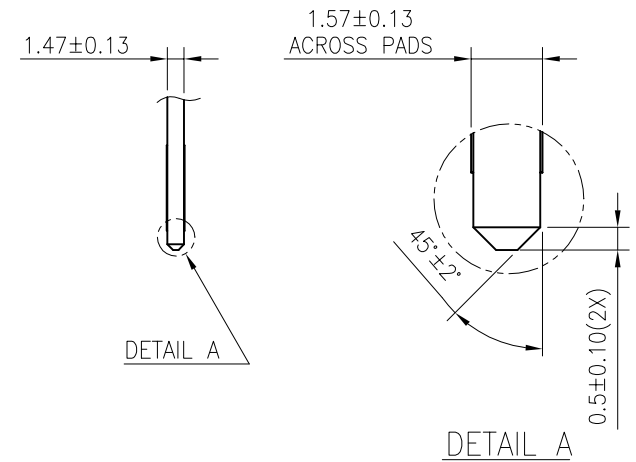
RECOMMENDED PCB LAYOUT



RECOMMENDED DAUGHTER CARD LAYOUT (TOP SIDE)






DETAIL B
SCALE 5:1



DETAIL A

DETAIL A

mat'l. code				tolerances unless otherwise specified				CUSTOMER COPY		 www.fciconnect.com		
ltr	ecn no	dr	date	linear	.X ± 0.25			projection		title POWER EDGE CARD CONNECTOR WITHOUT SIGNAL ASSY		
N					.XX ± 0.15							
					.XXX ± 0.10							
				angles	0° ± 2°				product family size dwg no			code —
		dr	LH	10/28/04								
		engr	LH	10/28/04								
		chr	LH	10/28/04			scale NONE	A3 10035388			sheet 3 of	
		appd	DAVID SU	10/28/04								
sheet index	revision sheet											

ASSY P/N	HOUSING		SHORT POWER PIN		LONG POWER PIN		AC TERMINAL		REMARK
	P/N	QTY	P/N	QTY	P/N	QTY	P/N	QTY	
10035388-000	10036975-01	1	10028889-101	29	10028889-201	29	N/A	0	ALL LOADED
10035388-000LF			10028889-102		10028889-202				
10035388-001	10036975-01	1	10028889-101	24	10028889-201	24	N/A	0	SELECTIVE LOADED
10035388-001LF			10028889-102		10028889-202				
10035388-100	10036975-02	1	10028889-101	25	10028889-201	25	N/A	0	ALL LOADED
10035388-100LF			10028889-102		10028889-202				
10035388-101	10036975-02	1	10028889-101	21	10028889-201	21	N/A	0	SELECTIVE LOADED
10035388-101LF			10028889-102		10028889-202				
10035388-200	10036975-03	1	10028889-101	31	10028889-201	31	N/A	0	ALL LOADED
10035388-200LF			10028889-102		10028889-202				
10035388-201	10036975-03	1	10028889-101	26	10028889-201	26	N/A	0	SELECTIVE LOADED
10035388-201LF			10028889-102		10028889-202				
10035388-300	10036975-04	1	10028889-101	32	10028889-201	32	N/A	0	ALL LOADED
10035388-300LF			10028889-102		10028889-202				
10035388-301	10036975-04	1	10028889-101	25	10028889-201	25	N/A	0	SELECTIVE LOADED
10035388-301LF			10028889-102		10028889-202				
10035388-400	10036975-05	1	10028889-101	22	10028889-201	22	N/A	0	ALL LOADED
10035388-400LF			10028889-102		10028889-202				

mat'l code				tolerances unless otherwise specified		CUSTOMER COPY		www.fciconnect.com	
ltr	ecn no	dr	date	linear	.X ± 0.25	projection		title	
N					.XX ± 0.15			POWER EDGE CARD CONNECTOR	
				angles	.XXX ± 0.10		product family	code	
					0° ± 2°			WITHOUT SIGNAL ASS'Y	
				dr	LH	10/28/04	mm	size	
				engr	LH	10/28/04		dwg no	
				chr	LH	10/28/04	scale	sheet	
				appd	DAVID SU	10/28/04		4 of	
sheet index	revision	sheet							



ASSY P/N	HOUSING		SHORT POWER PIN		LONG POWER PIN		AC TERMINAL		REMARK
	P/N	QTY	P/N	QTY	P/N	QTY	P/N	QTY	
10035388-500	10036975-06	1	10028889-101	28	10028889-201	28	N/A	0	ALL LOADED NO KEY
10035388-500LF			10028889-102		10028889-202				
10035388-600	10036975-08	1	10028889-101	17	10028889-201	17	10051577-003	2	SELECTIVE LOADED
10035388-600LF			10028889-102		10028889-202				
10035388-700	10036975-07	1	10028889-101	32	10028889-201	32	N/A	0	ALL LOADED NO KEY
10035388-700LF			10028889-102		10028889-202				
10035388-800	10036975-09	1	10028889-101	17	10028889-201	17	N/A	0	ALL LOADED NO KEY
10035388-800LF			10028889-102		10028889-202				
10035388-900	10036975-10	1	10028889-101	14	10028889-201	14	N/A	0	ALL LOADED
10035388-900LF			10028889-102		10028889-202				

mat'l. code				tolerances unless otherwise specified			CUSTOMER COPY	www.fciconnect.com	
ltr	ecn no	dr	date	linear	.X ± 0.25				
N					.XX ± 0.15		projection		
					.XXX ± 0.10				
				angles	0° ± 2°				
				dr	LH 10/28/04				
				engr	LH 10/28/04			product family size/dwg no	
				chr	LH 10/28/04				
				appd	DAVID SU 10/28/04		scale NONE	A3 10035388	
sheet index		revision sheet							
								code -	
								sheet 5 of	

